

# Intercultural Waldorf Education: Why Here, Why Now, Why Us?

Dr. Ida Oberman  
INASTE Congress

Vienna, Austria  
May 19, 2022

# Agenda

## 1. The Challenge Before Us

- a. Increasing segregation accelerated by COVID 19
- b. Increasing dependency on integration accelerated by COVID 19
- c. Increasing need for academic practitioner partnership accelerated by COVID 19

## 2. Promising Practice why here why now why us

- a. One Case: Our Demographic; Our Results - despite COVID 19
- b. Our Key Strategies - Waldorf Focus on Whole Child, Whole School, Whole Community, Whole Globe
- c. Our Invitation May 12, 2022: Mills Alanus CSCE University Assisted Community Schools National Network
- d. Our Recognition May 18, 2022: California Community School Implementation Grant As Waldorf Full Service Community School

## 3. Opportunities and Risks

- a. Stepping Forward from Behind the Curtain Racism in Steiner's works; hierarchy of cultures; the absence of an anti fascist movement under Hitler - no equivalent to a Bekennende Kirche
- b. Suggested next steps to seize the Waldorf opportunity

Discussion.

# 1. The Challenge Before Us

Since COVID Economic Segregation Has Worsened Widening the Achievement Gap UC Berkeley Professor Bruce Fuller and Colleagues state in February 22 Article.

- a. **Increasing segregation accelerated by COVID 19**
  - i. **Growing isolation of low income families largely of color by study of UC Berkely's Bruce Fuller Isolation has heightened under COVID where those who could fled to leafu suburbs**
  - i. **The recovery threatens to be K shaped that some will move up and out and others will fall further down by McKinsey Study December 2021**
- a. **Increasing dependency on integration accelerated by COVID 19**
  - ii. **The solution depends first on integration where higher expectations more resources and more hope prevail both author group sargue**
  - iii. **Thsi is not just a question of more money. It is a matter of will to test new bold ides**
- a. **Increasing need for academic practitioner partnership accelerated by COVID 19 to find new solutions - systems transformational solutions**

## 2. Why Here, Why Now, Why Us: Promising Practice

2008-2022 14 years old Oakland CA USA

**To Counter Notion Waldorf Is White Wealthy and Weird**

**Opened in 2011 with 80 students in K-3; grew to 280 students in 2019-20 through Community Organizing**

**Focused on Harnessing Waldorf to Advance Equity**

**Educating the Head, Hands, and Heart of Each Child To Transform Our Education System**

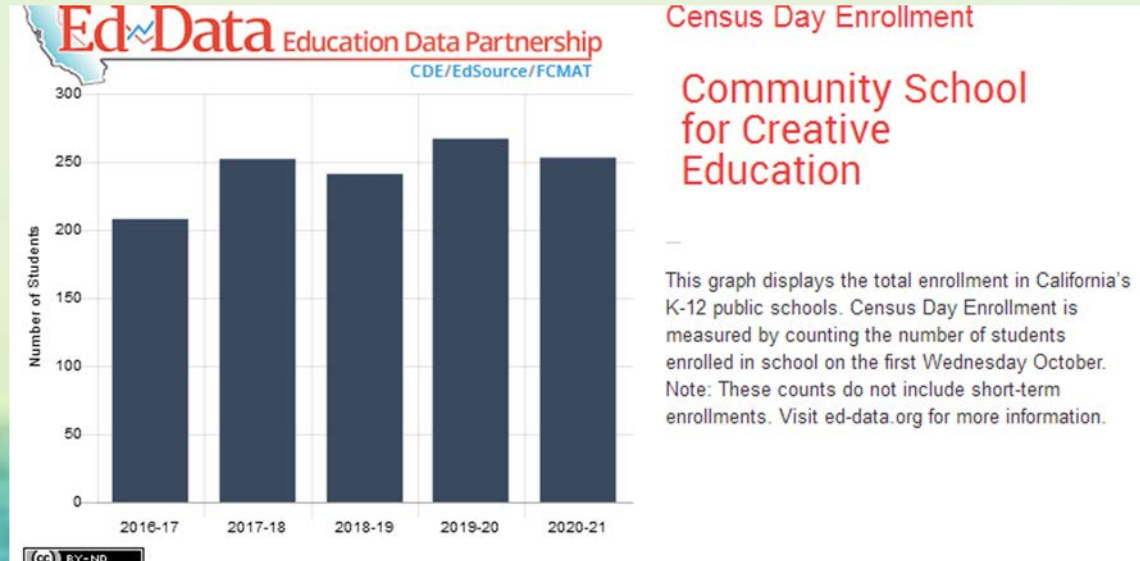
**Our Mission:**

**The Community School for Creative Education partners with families and communities to provide a rigorous college-preparatory program integrated into a culturally rich, arts-infused, highly personalized curriculum inspired by Waldorf education for the diverse students of Oakland to promote equity and prepare culturally competent, well-rounded, lifelong learners to lead, contribute to, and successfully participate in our rapidly changing multicultural society.**

## 2. Why Here, Why Now, Why Us: Promising Practice

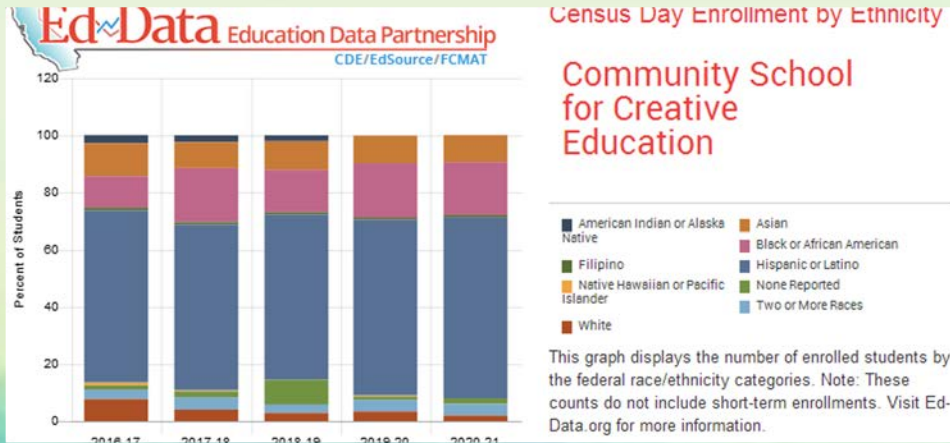
One Case - Community School for Creative Education - the Country's First Intercultural Public Waldorf School

2a. Who We Are - Sustained Growth Over Time



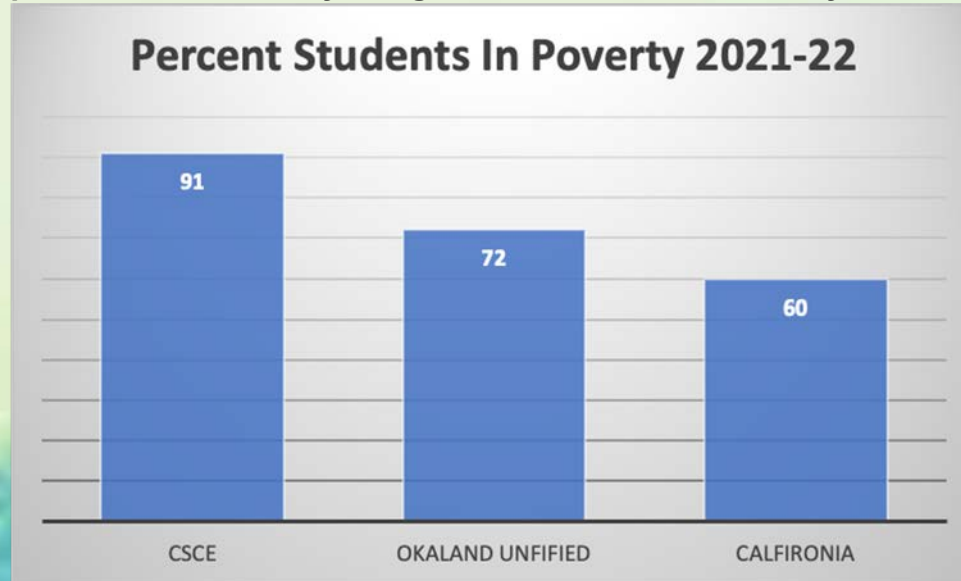
## 2. Why Here, Why Now, Why Us: Promising Practice

### 2a. Who We Are - Our Demographic - Sustained Diversity Over Time - Among The Most Diverse In the State



## 2. Why Here, Why Now, Why Us: Promising Practice

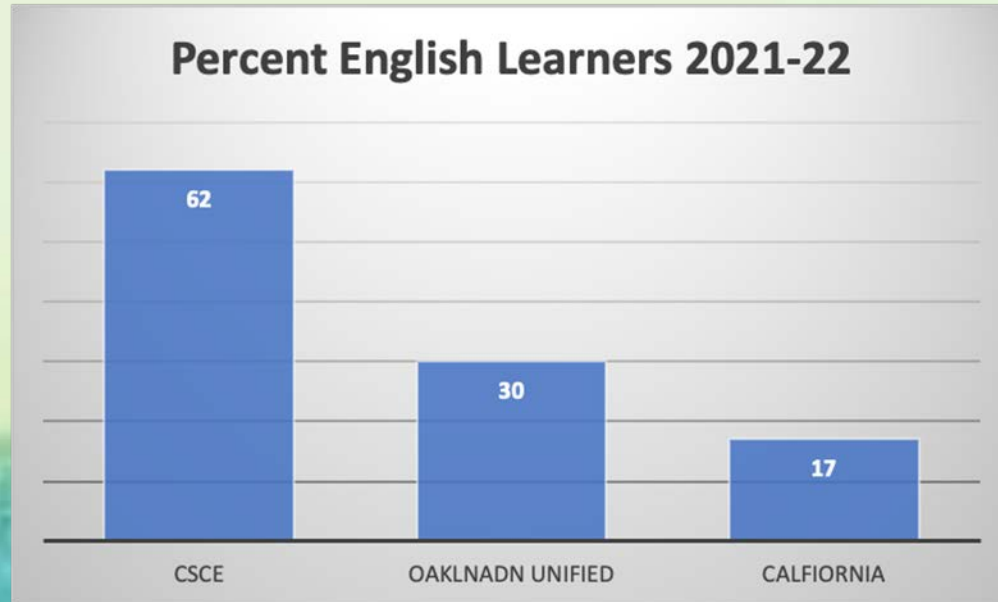
2a. Who We Are - Our Demographic - Did Not Gentry - Highest % Children In Poverty In the State





## 2. Why Here, Why Now, Why Us: Promising Practice

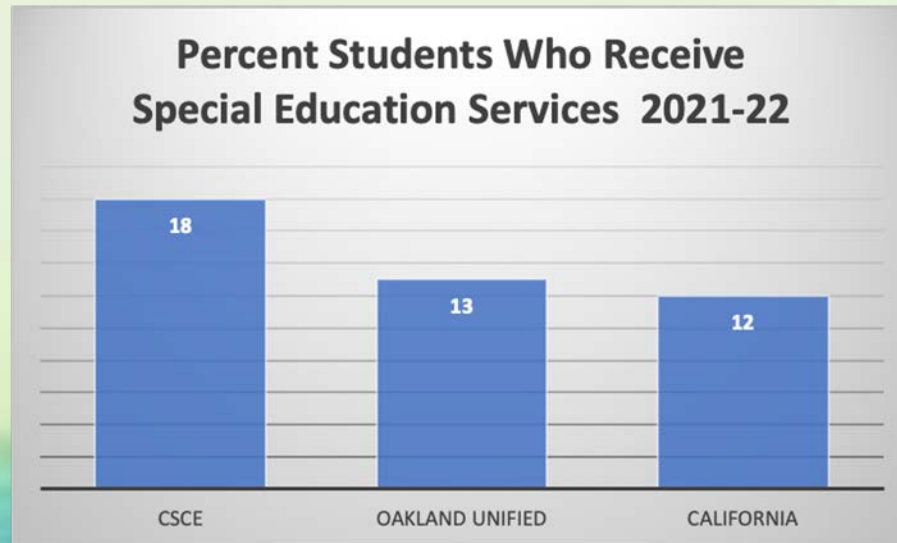
2a. Who We Are - Our Demographic - Serving Among the Highest % English Learners In the State





## 2. Why Here, Why Now, Why Us: Promising Practice

2a. Who We Are - Serving Among the Highest % Children Who Receive Special Education Services In the State



## 2. Why Here, Why Now, Why Us: Promising Practice

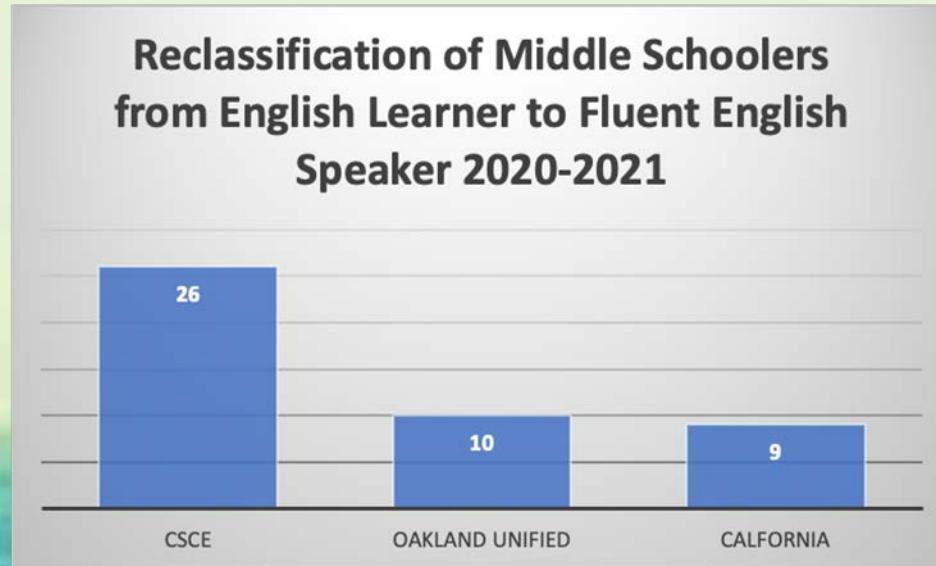
### 2b. Our Results - 2019-- 2022

**Though CSCE serves more English Learners and students with Special Needs than the District and surrounding schools, on 2019 ELA State Tests...**

- **CSCE African American Students showed highest test results across all of Oakland in ELA and Math;**
- **CSCE Latino Middle Schoolers were in the top third across all of Oakland in ELA and Math growth, winning the 'high growth' awards**
- **CSCE English Language Learners showed double the gains of their District peers for 6th year in a row;**
- **CSCE Students Identified Special Needs showed double the gains of the District for 6th year in a row.**

## 2. Why Here, Why Now, Why Us: Promising Practice

2b. Our Results - Despite COVID & More English Learners - Outperform District and State in Rate Reclassification



## 2. Why Here, Why Now, Why Us: Promising Practice

**Our Results - Despite COVID and serving more vulnerable students in 2021-2022**

- **CSCE students are outperforming their peers in Math NWEA MAP Score with average growth of 4%**
- **CSCE students grades 3-8 showing increased test scores in Reading**
- **The lowest performing students are accelerating in their Reading as shown through Fountas&Pinnell Test**
- **CSCE 4th graders who started 88% below grade level in reading in fall reduced to 28% below grade level in winter**
- **Newcomers to CSCE grow not speaking English grew an average of 300 points in their mastery of English**

## 2. Why Here, Why Now, Why Us: Promising Practice

**Working With Hand and Heart and Head: Whole School - Families**

**Working with heart to celebrate ALL World Languages ALL World Festivals The Day of the Young Child (Mexican)**



## 2. Why Here, Why Now, Why Us: Promising Practice

2. Promising Practice why here why now why us Whole Community - Alumni and Their Friends  
Working With Head Heart and Hand- Whole Community School Feast With CSCE Graduate Band (next to me on left)





## 2. Why Here, Why Now, Why Us: Promising Practice

2. Promising Practice why here why now why us Whole Community Neighborhood  
Working With Head Heart and Hand- Whole Community Feast To Celebrate Our Neighborhood





2. Promising Practice why here why now why us  
Working With Head Heart and Hand- Whole Community - O  
Community Center for Our Community - CSCE Baby Shower!



## 2. Why Here, Why Now, Why Us: Promising Practice

### 2. Promising Practice why here why now why us Whole Community

Working With Head Heart and Hand- COVID Vaccine Clinic for Our Community



## 2. Why Here, Why Now, Why Us: Promising Practice

2. Promising Practice why here why now why us Whole City - Elected Officials and Press  
Working With Head Heart and Hand- Mayor's Press Conference With CSCE Students Fight with Whole City  
Against Illegal Dumping Oaktown PROUD





## 2. Why Here, Why Now, Why Us: Promising Practice

2. Promising Practice why here why now why us Whole County - Elected Officials & Faith Community  
The Board Chair of the Alameda County Office of Education Brings Hand-Sewn Blankets for our Kindergartners  
The Pastor Offers Mentoring Grades 5-8 To Young Boys



## 2. Why Here, Why Now, Why Us: Promising Practice

2. Promising Practice why here why now why us Whole World Global University Community School Partnership  
Working as CSCE/Mills College University School Partnership with Alanus & Freunde der Erziehungskunst



## 2. Why Here, Why Now, Why Us: Promising Practice

### 2. Promising Practice why here why now why us

b. its recognition: leading for change in the city; high level of community and city wide recognition and strength

**Just In last Thursday May 12 2022:**

**CSCE with Mills College - and its partner Alanus -  
Invited to be part of University Assisted Community Schools National  
Network (UACS)!! A free university learning community**

## 2. Why Here, Why Now, Why Us: Promising Practice

### 2. Promising Practice why here why now why us

b. its recognition: leading for change in the city; high level of community and city wide recognition and strength

**Just In yesterday May 18 2022:**

**CSCE Awarded by California Department of Education**

**\$1,187,500 Over Five Years As**

**California Community Schools Partnership Program Implementation**

**Grant 2022-2026**



# 3. Opportunities and Risks

- a. **Stepping Forward from Behind the Curtain**
  - i. [Frankfurter Memorandum Rudolf Steiner on Subject of Racism](#)
  - ii. [Stuttgarter Erklärung: Waldorfschule Gegen Diskriminierung](#)
  - iii. Others?
- b. **Building Strategic Climbing Partners**
  - i. [Zaretta Hammond Culturally Responsive Teaching and the Brain](#) 2016
  - ii. [The National Equity Project](#)
- c. **Be Sure We Do the Inner Work For Transformational Resonance NOT Ask Others' Backs To Be Our Bridge**
  - i. [The Bridge Called My Back](#)

# Waldorf's Opportunity Of The Now

- **Thank You! Now: Questions? Comments?**

